



# GMT MONTHLY MEMBERSHIP PROGRESS REPORT

Results as of: 4/30/2024

Multiple District 325

LOCATION: NEPAL

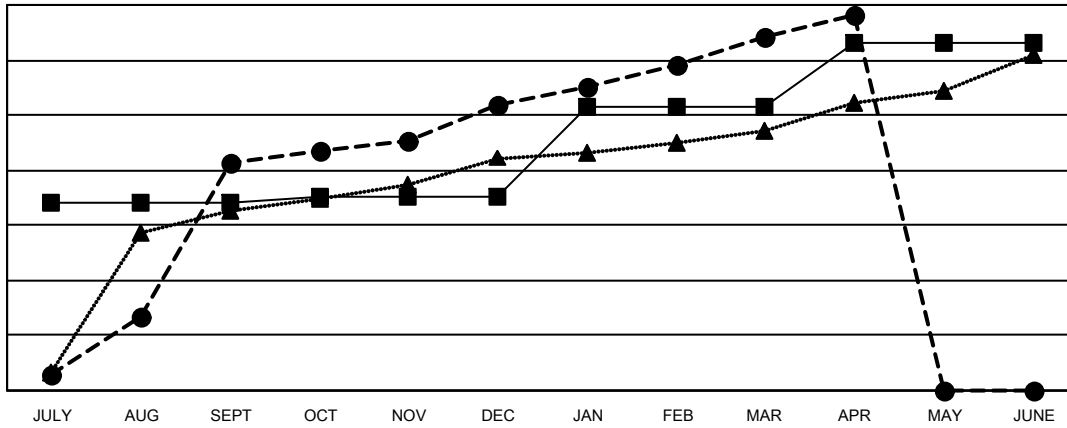
GMT: OPEN

GMT CA 6 - S

Clubs			
RESULTS FOR 2023-2024			
QUARTER	NEW CLUB GOAL	NEW CLUBS	DROPPED CLUBS
JULY/AUG/SEPT	136	166	36
OCT/NOV/DEC	5	41	120
JAN/FEB/MAR	65	50	38
APR/MAY/JUNE	47	16	13

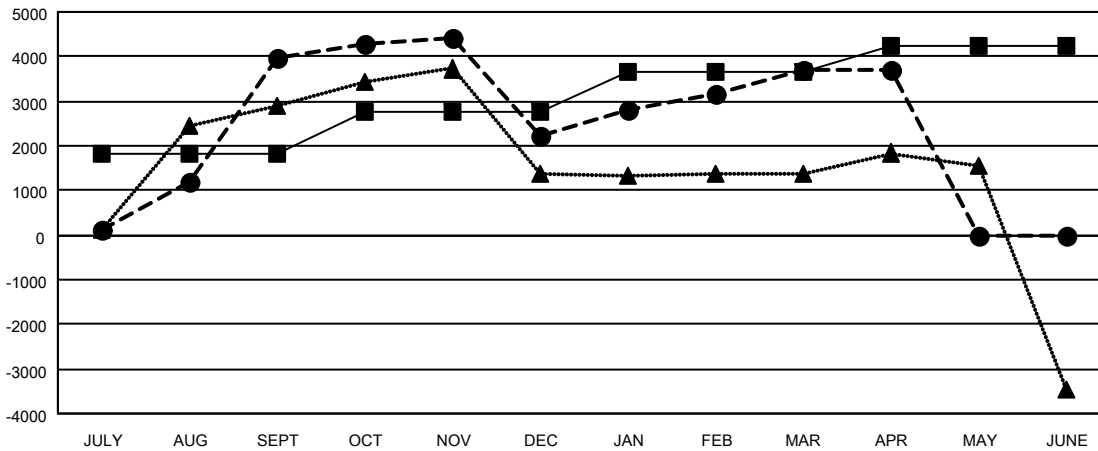
Members			
RESULTS FOR 2023-2024			
QUARTER	MEMBER GROWTH NET GOAL	MEMBER GROWTH ACTUAL	DROPPED MEMBERS ACTUAL (including transfers)
JULY/AUG/SEPT	1,804	6,399	2,198
OCT/NOV/DEC	957	2,537	4,218
JAN/FEB/MAR	879	3,144	1,409
APR/MAY/JUNE	615	516	408

GOALS AND ACTUAL NEW CLUBS CUMULATIVE



- - CURRENT YEAR GOALS FOR NEW CLUBS
- - CURRENT YEAR ACTUAL NEW CLUBS
- ▲ - LAST YEAR ACTUAL NEW CLUBS

GOALS AND ACTUAL MEMBERS CUMULATIVE



- - MEMBER GROWTH NET GOAL
- - MEMBER GROWTH ACTUAL
- ▲ - LAST YEAR MEMBERSHIP ACTUAL

DROPPED CLUBS: 205	1382 CLUBS OF 2112 ADDED 1 OR MORE NEW MEMBERS	<b>GENDER DISTRIBUTION</b>
		MALE 30,543 (68.78%)
		FEMALE 13,866 (31.22%)
<b>DROPPED MEMBERS</b>	<a href="#">CLICK HERE FOR CUMULATIVE MEMBERSHIP DATA</a>	TOTAL FAMILY UNIT MEMBERS 32,425
DECEASED 33		FAMILY MEMBERS PAYING HALF DUES 22,693
CLUB CANCELLED 3,018		
OTHER 5,174		
<b>TOTAL 8,225</b>		